



# The National Specialist Training Programme in General Practice

## Prospectus 2024



**#BEAGP**

[www.beagp.com](http://www.beagp.com)



[www.icgp.ie](http://www.icgp.ie)



## Welcome

It gives me great pleasure to introduce the wonderful medical specialty of General Practice. I hope you will find the information contained in this 'National Specialist Training Programme in General Practice' prospectus a useful tool in informing and guiding you on your decision to apply for GP Training.

In this prospectus you will find key information on our vision for GP training, our mission, and values, together with the facts about the National GP training programme, the process of recruitment to the programme and details on each of the training schemes.

Since March 2021, the ICGP has had sole responsibility for postgraduate medical training in the specialty of General Practice. As part of this responsibility, the ICGP designs and delivers a world-class, highly innovative and continuously improving GP training scheme, as set out in our vision, mission and values statement.

There are currently over 1,000 trainees enrolled on the GP training programme and we intend to increase our annual intake into training in 2024.

There is a national shortage of GPs, and you will thus be joining this programme and specialty at a most exciting time with numerous opportunities awaiting you on completion of your training.

### **Dr Martin Rouse**

*National Director of Specialist Training in General Practice*

## THE IRISH COLLEGE OF GENERAL PRACTITIONERS



The Irish College of General Practitioners is the postgraduate training body (PGTB) responsible for postgraduate education, training, and research in the specialty of General Practice. The College has a national advisory role in relation to medical standards and engages with the Medical Council, Department of Health, the Health Service Executive, National Doctors Training & Planning and the Health Information & Quality Authority amongst others. As a membership organisation, the ICGP is responsible for providing and supporting continuous professional development for general practitioners, numbering over 4,500. The ICGP is the PGTB accredited by the Medical Council to provide professional training for doctors wishing to enter the speciality of General Practice.

## Vision Statement



Every patient and their community has access to a professional, committed, and holistic GP, who has the ability to respond to the physical, psychological, and social health needs of their patients and the communities in which they practise.

## Values Statement



The national training programme is based on the values of community responsiveness, patient-centredness, high quality, evidence-based practice, and holistic care.

## Mission Statement



The mission of the training programme is to train doctors to be professional, competent, community-adaptive, and fulfilled GPs in an effective and equitable way that meets the current and future needs of patients, trainees and the profession.

This is done by providing an appropriate combination of workplace learning, taught elements, self-reflection, mentoring, and peer learning, in a variety of settings, to foster individual progression from novice to independent practitioner and instil habits of life-long learning.

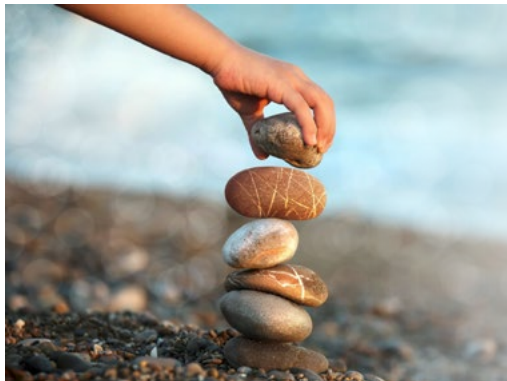
## WHY GENERAL PRACTICE?

### Make a real difference



- Be a GP and make a **genuine difference** to the lives of people and communities.
- Watch your patients **grow and recover**, adapt and change.
- **Be part of a team** that makes a difference to an individual by listening, helping and being **passionate** about their care and their lives.
- Enjoy the **diversity**.
- Be a listener.
- Be a **problem-solver**.

### Enjoy a balanced life



- Be a GP and **control your hours**, define your day.
- Protect your time to learn and **work to live**, not live to work.
- Enjoy a life with **independence and flexibility**.
- Have a **family-centred lifestyle**, in the heart of your **community**.

### Be a generalist and a specialist



- Be a GP and be a **diagnostic powerhouse**, challenged by every patient who walks through your door.
- In any one day, **diagnose a wide variety of conditions**, from heart disease to depression, minor surgery and paediatrics – helping patients with all medical presentations.
- **Partake in lifelong learning**, with CME, **supportive professional networks** and opportunities to **develop special interests**.

WHY OUR TRAINEES CHOOSE GENERAL PRACTICE AS A CAREER

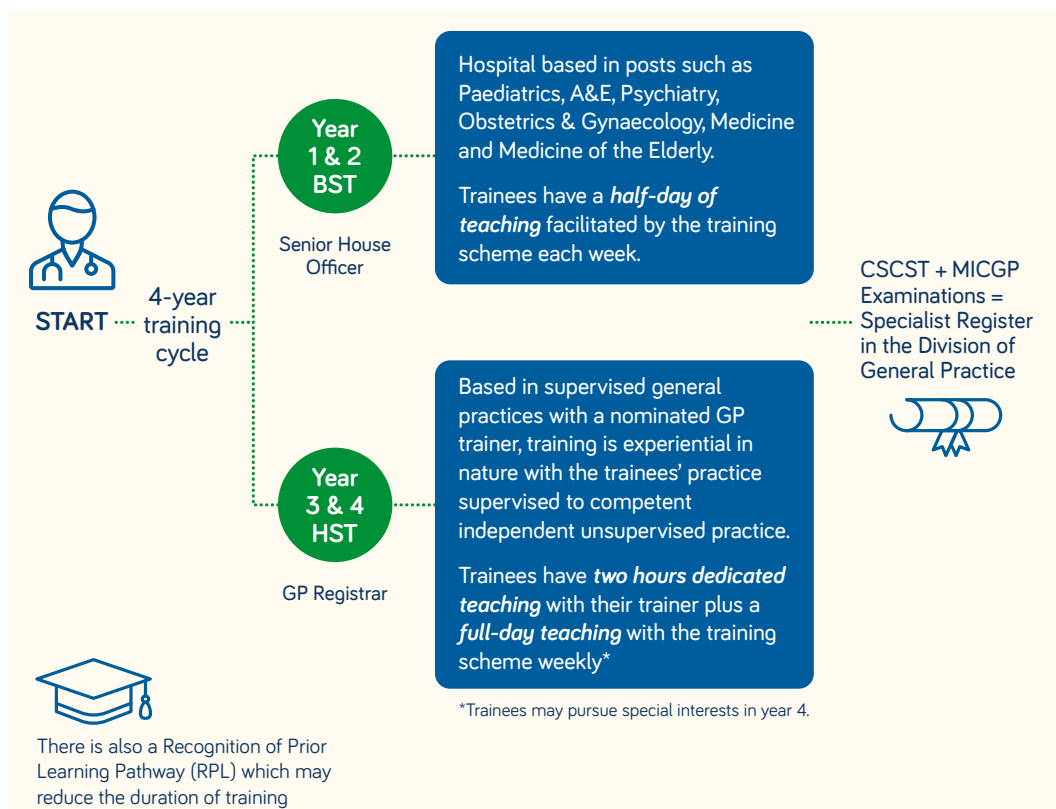


To view recordings from current and past trainees as well as other members of the GP training community, please visit [beagp.com](http://beagp.com)

Source: Feedback from ICGP trainees, August 2022

WHY THE ICGP GP TRAINING PROGRAMME?

ICGP General Practice Training Programme



## Recognition of Prior Learning (RPL) Pathway



We recognise that some applicants may have prior clinical experience which is relevant to their GP training journey.

To be eligible, applicants must have completed their basic specialty training (BST) in medicine, paediatrics or emergency medicine and achieved their relevant membership examinations by July 2024.

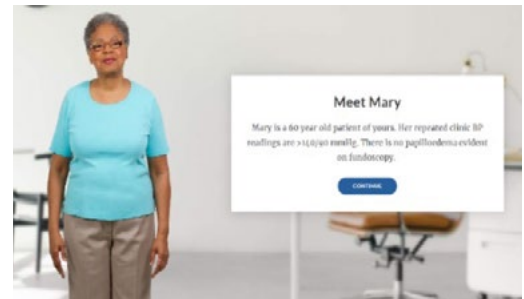
The ICGP will accredit prior learning and shorten GP training by 12 months from four years to three years for candidates who meet the agreed standard.

[Recognition of Prior Learning 2024](#)

## Methods of teaching and learning

Small group teaching at day release facilitates reflective practice for the trainee with their peers and educational supervisor. Practical and simulated training in a supportive environment is a central feature.

The Digital Resources Hub gives trainees access to a suite of interactive, case based and accessible blended learning on key curriculum topics.



## Assessment



The ICGP is engaged in competency-based medical education (CBME) and has developed a set of Entrustable Professional Activities (EPAs) specific to Irish General Practice to enhance and focus trainee learning in the workplace. Training continues to be learner-centered and innovative in its delivery. Each episode of workplace-based feedback is designed for trainee learning. Trainees are encouraged to actively seek feedback from their clinical trainers and to demonstrate their professional and clinical growth throughout their training. Tailored EPA software, available as an App and website, has been designed for this purpose. Trainees are expected to regularly review their workplace-based feedback entries with their clinical trainers and educational mentors. Obtaining EPA feedback is a mandatory component of the GP Training Programme and will be reviewed by Scheme Competency Progression Committees as part of regular high stakes progression assessment. In addition to demonstrating clinical competence using the EPA framework, trainees will be required to pass MICGP (Membership of the Irish College of General Practitioners) examinations.

## ICGP SUPPORTS



### Network of GP Trainees



The Network is the general practice trainee voice on training matters. Any trainee can be a committee member. There are two trainees per scheme.

#### *Aims of the Network of GP Trainees*

- To advocate for trainees – education, training and professional development
- To represent trainees at the ICGP and other bodies
- To encourage collaboration between trainees on different schemes
- To encourage involvement of trainees in college
- To keep trainees well informed on education and training related issues

### The ICGP Near Peer Mentorship Programme



ICGP trainees can benefit from a national peer mentorship programme to support their training. Near peer mentoring is where GP registrars volunteer to act as mentors to first year trainees, a developmental process which benefits both mentor and mentee.

Clinicians who have been mentored are shown to be more motivated, have better developed professional identities, and feel better supported in their jobs than doctors without mentors.

## The Network of Establishing GPs (NEGS)



ICGP NEGs Programme provides a suite of supports and services to establishing College members. ICGP members are considered to be a NEGs member from the 4th year of training until five years from the date of graduation.

The aim of ICGP NEGs is to support establishing members and foster active involvement in college.

Their publication 'Signposts to Success' is an exceptional resource for those on financial or career advice.

## The ICGP Library and Information Service



The ICGP library's main function is to support Trainees and the wider membership of the College by providing access to relevant publications. It provides access to high-quality, evidence-based information relevant to Irish general practice.

### *Library Services:*

- Literature searches: Assist in carrying out literature searches on clinical topics as requested.
- Library catalogue: Includes access to ICGP resources, Forum journal articles and ICGP publications and statements.
- Online resources: Useful links to external organisations, databases, newsletters and ICGP Help Sheets.

## Doctors Health Programme



The aim of the ICGP Doctors' Health in Practice Programme is:

- To motivate every GP and GP Trainee to register with a GP and to consult their GP for symptom management, medical investigations, prescriptions and referrals to other doctors and health services.
- To reinforce GP healthcare / primary health care as first point of care for every doctor.
- To promote and support good physical health, occupational health, psychological health and wellbeing for GPs and GP Trainees.
- To enhance GPs and GP Trainees wellbeing activities outside work, for example physical activities, community volunteerism, hobbies and creative arts.

[Doctors' Healthcare Support](#)



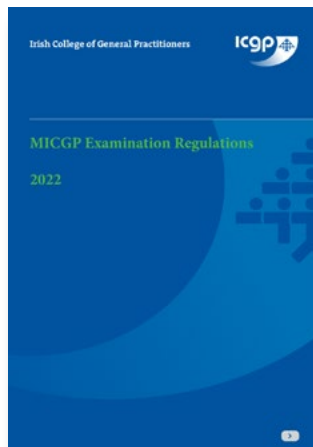
## Policies to Support you in Training



During the four-year training programme, the trainee will encounter a diverse range of experiences and challenges, most of which will be routine. However, the ICGP recognises that although life as a trainee can be very rewarding there are occasions when trainees may need further support. The College has developed a suite of policies, which are constantly evolving, and are designed to support all trainees throughout their training.

As well as downloading the above, please visit the [curriculum section](#) of our website.

## MICGP Examinations



The MICGP is a postgraduate assessment comprising of two examinations. The Core Knowledge Test (CKT) is a single best answer written paper delivered online, and the Clinical Competency Test (CCT) is an in-person clinical examination, designed as a simulated surgery comprising long and short cases.

The MICGP exam is designed to assess a candidate's clinical knowledge, skills and attitudes and determine if they meet the standard appropriate for independent practice as a specialist General Practitioner. Each exam module and question is mapped to a defined area of the GP Training curriculum and competency of a General Practitioner.

## MICGP Qualification



On successful completion of training and MICGP examinations, ICGP trainees are awarded a Certificate of Satisfactory Completion of Training which will enable registration on the Medical Council Register as a Specialist in the Division of General Practice.

## OVERVIEW OF THE NATIONAL GP TRAINEE RECRUITMENT PROCESS

### STEP 1

**Application:** Online application (Part A) opens early October to allow applicants to apply for the Situational Judgement Test (SJT) and Clinical Problem-Solving Test (CPST). Applicants complete a brief application form, pay a non-refundable application fee.

### STEP 2

**SJT & CPST:** The online SJT & CPST test window will be open from 10am–10pm on Thursday, 26 October. Applicants will be required to undertake the test in one sitting and will be required to set aside approximately three hours to complete the test. Full details on the test will be issued to applicants in advance of the test date.

**Successful SJT & CPST Applicants** that meet the minimum requirements in both tests will be required to complete *Part B* of the application form.

**Unsuccessful SJT & CPST Applicants** that do not meet the minimum requirements in both these will not proceed further in the 2024 recruitment process.

### STEP 3

**Application Form and Eligibility (Application Part B):** Applicants successful in Step 2 (above) will be required to complete Part B of the application form. This requires applicants to provide evidence of meeting the [HSE and IMC eligibility criteria](#), details of previous hospital experience, qualifications, referee details and apply for [Recognition of Prior Learning \(RPL\)](#), if applicable. Applications are reviewed to ensure the appropriate supporting documentation confirming that requirements for HSE English language competency and eligibility for the trainee specialist register are met.

### STEP 4

**Shortlisting:** Shortlisting is based on performance at SJT and CPST tests and on applicants having completed a minimum of nine months clinical experience. The clinical experience must be paid full time (or equivalent), postgraduate acute hospital based, either as an intern or SHO by the time of starting GP training in July 2024.

### STEP 5

**Reference Upload and Interview Consent:** Candidates invited to interview are required to complete an online validation and consent process prior to interview. This includes uploading BST references x 2, ID and declaration form.

### STEP 6

**Interview:** Interviews will be held online on Wednesday, 7 and Thursday, 8 February 2024. Candidates will be randomly allocated to interview panels and will be assessed on a number of core competencies.

### STEP 7

**Scheme Selection:** Following the interview, candidates deemed appointable will be required to select training scheme preferences (online).

### STEP 8

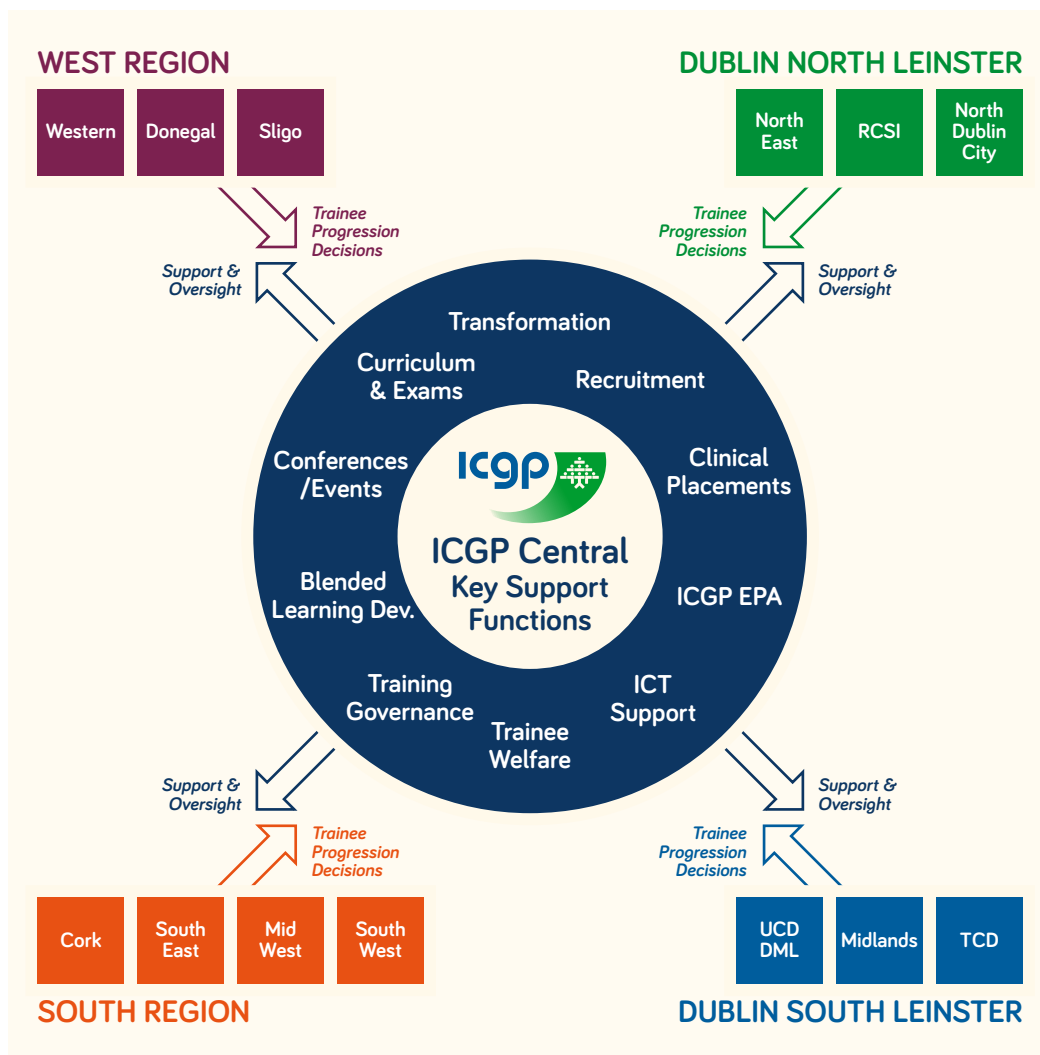
**Rank and Match:** A rank and match is undertaken, taking into account the number of available places on schemes, [HSE national policy on the allocation of training places](#), and candidates' total overall score and training scheme preferences.

### STEP 9

**Offers:** Offers are made in rank order in accordance with the national allocation policy. A candidate may either accept the offer, reject it or withdraw from the process.

Applicants are advised to review [Guide to Applicants](#) in conjunction with this prospectus.

HOW THE SCHEMES ARE REGIONALISED



**Training sites outlined below are not definitive. They are for guidance and will be subject to change.**

The ICGP and each individual Training Scheme aspires to ensure that allocation of trainees to training posts is fair and transparent. Some Schemes may have training posts that are preferred by trainees; this can make it difficult to facilitate every trainee with their first choice post. As a consequence, training posts may be allocated randomly, according to a trainee’s prior experience or due to local work force requirements. If offered a place on the Training Programme, *applicants must be aware that at all stages throughout the training process it may not be possible to facilitate allocation to preferred training sites or posts, and that they must accept the hospital posts and GP training practices assigned to them by their Training Scheme.*

# WEST REGION

## DONEGAL

<b>Scheme Director</b>	Dr. Katherine Murray and Dr. Mark Hudson
<b>Scheme Contact Details</b>	074 91 23742 <a href="mailto:donegal.scheme@icgp.ie">donegal.scheme@icgp.ie</a>
<b>Location of Day Release</b>	Education Centre, St. Conal's Hospital, Letterkenny, Co. Donegal
<b>Day Release held on</b>	Half-day Wednesday and full-day Thursday
<b>Intake in 2022</b>	13 including 1 RPL
<b>Hospital Based Posts</b>	The majority of hospital training posts are based in Letterkenny University Hospital. Psychiatry posts have some community based clinics.
<b>GP Training Practices</b>	There are 25 GP trainers attached to the Donegal scheme. All training practices are in Co. Donegal. Trainees get a mix of training experiences in urban and rural practices.

## SLIGO

<b>Scheme Director</b>	Currently vacant
<b>Scheme Contact Details</b>	071 917 4603 <a href="mailto:sligo.scheme@icgp.ie">sligo.scheme@icgp.ie</a>
<b>Location of Day Release</b>	Sligo Airport, Strandhill
<b>Day Release held on</b>	Thursday
<b>Intake in 2022</b>	12
<b>Hospital Based Posts</b>	Most of the hospital training posts are based in Sligo University Hospital. Some of the posts have satellite clinics. Rheumatology post based in Manorhamilton, Co. Leitrim.
<b>GP Training Practices</b>	There are 30 GP trainers attached to the Sligo scheme. Training practices are in Donegal, Leitrim, Mayo, Roscommon and Sligo.

## WESTERN

<b>Scheme Director</b>	Dr. Lynn Spooner
<b>Scheme Contact Details</b>	087 183 3794 <a href="mailto:western.scheme@icgp.ie">western.scheme@icgp.ie</a>
<b>Location of Day Release</b>	TBC
<b>Day Release held on</b>	Tuesday and Wednesday
<b>Intake in 2022</b>	36 including 7 RPL
<b>Hospital Based Posts</b>	<p>Training posts are based across four hospital sites within the Saolta group: Galway, Portiuncula (Ballinasloe), Roscommon, and Mayo University Hospitals.</p> <p>We also offer training posts in Community Mental Health across Ballinasloe, Mayo, and Galway services.</p> <p>Galway and Mayo Hospice are also training sites on our scheme.</p>
<b>GP Training Practices</b>	There are 58 GP trainers attached to the scheme. Training practices are in Galway, Mayo, Roscommon and Westmeath.

## SOUTH REGION

### CORK

<b>Scheme Director</b>	Dr. Sheila Rochford		
<b>Scheme Contact Details</b>	021 490 2312 <a href="mailto:cork.scheme@icgp.ie">cork.scheme@icgp.ie</a>		
<b>Location of Day Release</b>	St. Mary's Health Campus, Gurrabraher Rd, Gurrabraher, Cork		
<b>Day Release held on</b>	Wednesday	<b>Intake in 2023</b>	24 including 6 RPL
<b>Hospital Based Posts</b>	Cork hospital posts are based in Cork University Hospital, Cork University Maternity Hospital, Mallow General Hospital, Mercy University Hospital, Marymount Hospice, South Infirmary/Victoria University Hospital, St. Stephens Hospital.		
<b>GP Training Practices</b>	There are 40 GP trainers attached to the Cork scheme. The training practices are located in Cork City and Cork County.		

### MID WEST

<b>Scheme Director</b>	Dr. Brian McEllistrem		
<b>Scheme Contact Details</b>	061 213 485 <a href="mailto:midwest.scheme@icgp.ie">midwest.scheme@icgp.ie</a>		
<b>Location of Day Release</b>	GEMSI-019, Faculty of Education & Health Sciences, University of Limerick, Limerick		
<b>Day Release held on</b>	Wednesday	<b>Intake in 2023</b>	21 including 1 RPL
<b>Hospital Based Posts</b>	Training posts are distributed through the acute, long term and day hospitals throughout Limerick, Clare, Tipperary. These include University Hospital Limerick, St John's Hospital, University Maternity Hospital Limerick, Ennis Hospital, Nenagh General Hospital, Psychiatry Day Hospitals and Milford Care Centre.		
<b>GP Training Practices</b>	There are 29 GP trainers attached to the Mid West scheme. Training practices are located in Clare, Limerick and Tipperary.		

### SOUTH EAST

<b>Scheme Director</b>	Dr. Darach Brennan		
<b>Scheme Contact Details</b>	087 359 8628 <a href="mailto:southeast.scheme@icgp.ie">southeast.scheme@icgp.ie</a>		
<b>Location of Day Release</b>	GP Training Unit, Block A, 2nd Floor, Confederation House, Waterford Business Park, Cork Road, Waterford.		
<b>Day Release held on</b>	Wednesday	<b>Intake in 2023</b>	24 including 2 RPL
<b>Hospital Based Posts</b>	South East hospital posts are based in St. Luke's Hospital, Kilkenny, St. Luke's Hospital, Clonmel, Tipperary University Hospital, Wexford General Hospital and University Hospital, Waterford.		
<b>GP Training Practices</b>	There are 40 training practices attached to this scheme. Practices are located in Waterford, Wexford, Tipperary, Kilkenny and Carlow.		

### SOUTH WEST

<b>Scheme Director</b>	Dr. Peadar Ó Fionnáin		
<b>Scheme Contact Details</b>	087 672 4718 <a href="mailto:southwest.scheme@icgp.ie">southwest.scheme@icgp.ie</a>		
<b>Location of Day Release</b>	Sólás Building, North Campus, Munster Technological University, Tralee, Co. Kerry		
<b>Day Release held on</b>	Wednesday	<b>Intake in 2023</b>	15 including 1 RPL
<b>Hospital Based Posts</b>	Training posts are based in primarily in University Hospital Kerry, and also in Bantry General Hospital and Mallow General Hospital.		
<b>GP Training Practices</b>	There are 30 GP training practices attached to the scheme, located primarily in Kerry, with some in Cork and Limerick.		

# DUBLIN NORTH LEINSTER REGION

## NORTH EAST

<b>Scheme Director</b>	Mr. Enda Murphy		
<b>Scheme Contact Details</b>	046 907 6460 <a href="mailto:northeast.scheme@icgp.ie">northeast.scheme@icgp.ie</a>		
<b>Location of Day Release</b>	Primary Care Office, Leighsbrook Lane, off Railway St, Navan, Co. Meath		
<b>Day Release held on</b>	Tuesday and Thursday	<b>Intake in 2023</b>	27 including 2 RPL
<b>Hospital Based Posts</b>	Hospital posts are based in Cavan General Hospital, Crumlin Hospital, Connolly Hospital-Dublin, Midland Regional Hospital-Mullingar, Our Lady's Hospital-Navan, Our Lady of Lourdes Hospital-Drogheda, Royal Victoria Eye & Ear-Dublin, St. Brigid's Hospital-Ardee, St. Davnet's Hospital-Monaghan and Temple Street Children's Hospital-Dublin.		
<b>GP Training Practices</b>	There are 55 GP trainers attached to the North East scheme. Training practices are located in Cavan, Dublin, Louth, Meath and Monaghan.		

## RCSI

<b>Scheme Director</b>	Dr. Niamh O Carroll		
<b>Scheme Contact Details</b>	01 402 2302 <a href="mailto:rcsi.scheme@icgp.ie">rcsi.scheme@icgp.ie</a>		
<b>Location of Day Release</b>	Mercer's Medical Centre, Stephen Street Lower, Dublin 2		
<b>Day Release held on</b>	Wednesday	<b>Intake in 2023</b>	21 including 2 RPL
<b>Hospital Based Posts</b>	Hospital posts are based in Beaumont, Coombe, James Connolly Memorial, Mater, National Drug Treatment Centre, National Maternity Holles St., North Dublin Mental Health Services, Our Lady's Hospice-Harold's Cross, Our Lady of Lourdes-Drogheda, St. Vincents, St. Columcilles, St. Luke's Rathgar, St. James's, St. Mary's Phoenix park, St. John of God's, Tallaght, CHI posts (Paediatric) in Temple Street, Crumlin and Tallaght.		
<b>GP Training Practices</b>	There are currently 32 training practices attached to the RCSI scheme. The practices are in Dublin city (north and south) Kildare, Wicklow and Meath.		

## NORTH DUBLIN CITY

<b>Scheme Director</b>	Dr. Austin O'Carroll		
<b>Scheme Contact Details</b>	01 716 4505 <a href="mailto:northdublincity.scheme@icgp.ie">northdublincity.scheme@icgp.ie</a>		
<b>Location of Day Release</b>	Catherine McAuley Centre, 21 Nelson Street, Phibsboro, Dublin 7		
<b>Day Release held on</b>	Thursday	<b>Intake in 2023</b>	25 including 7 RPL
<b>Hospital Based Posts</b>	Hospital posts attached to the NDC scheme are based in Beaumont Hospital, Crumlin, James Connolly Memorial, Mater, Our Lady of Lourdes-Drogheda, Rotunda, St. James's, St. Vincent's, St. Francis Hospice, St. Mary's, Tallaght University Hospital and Temple Street Children's Hospital, Midland Regional Hospital - Mullingar, Holles Street Maternity Hospital, Peamount Hospital, St. Vincent's Fairview.		
<b>GP Training Practices</b>	There are 37 GP trainers attached to the scheme with practices in Dublin city and county. The NDC scheme's focus is on training for areas of deprivation and marginalised communities.		

# DUBLIN SOUTH LEINSTER REGION

## UCD DUBLIN MID LEINSTER (DML)

<b>Scheme Director</b>	Dr. Thomas Dennehy		
<b>Scheme Contact Details</b>	01 716 6626 <a href="mailto:ucd.scheme@icgp.ie">ucd.scheme@icgp.ie</a>		
<b>Location of Day Release</b>	Room C219, Health Sciences Complex, UCD, Belfield, Dublin 4		
<b>Day Release held on</b>	Tuesday	<b>Intake in 2023</b>	24 including 11 RPL
<b>Hospital Based Posts</b>	Hospital posts are based in Beaumont Hospital, Blackrock Hospice, Carew House for the Elderly, Cluain Mhuire Community Health, Clontarf Hospital, Connolly Hospital, Coombe Hospital, Crumlin Hospital, Holles St. Maternity Hospital, Newcastle Psychiatric Hospital, Naas General Hospital, Rotunda Hospital, Royal Hospital Donnybrook, St. Vincent's, St. James's, St. Michael's, St. Columcille's, Tallaght University Hospital, Temple Street Hospital, Wicklow Hospice, Midland Regional Hospital, East Blanchardstown Psychiatry Service, The Mater Hospital, The Royal Victoria Eye and Ear Hospital and Our Lady of Lourdes Hospital, Drogheda.		
<b>GP Training Practices</b>	There are 60 GP trainers attached to the UCD DML scheme. Training practices are located in Dublin, Kildare, Meath, Wexford and Wicklow, Westmeath, and Laois.		

## TCD

<b>Scheme Director</b>	Dr. Aisling Ni Shuilleabhain		
<b>Scheme Contact Details</b>	01 896 3460 <a href="mailto:tcd.scheme@icgp.ie">tcd.scheme@icgp.ie</a>		
<b>Location of Day Release</b>	School of Medicine TCD, Institute of Population Health, Russell Centre, Tallaght Cross, Dublin 24		
<b>Day Release held on</b>	Thursday	<b>Intake in 2023</b>	27 including 5 RPL
<b>Hospital Based Posts</b>	Hospital posts are based Beaumont, CHI Crumlin, Coombe Hospital, Holles St. Maternity Hospital, Connolly Hospital, Mater Hospital, NOH Cappagh, Our Lady's Hospice, Peamount, Rotunda, Royal Hospital Donnybrook, St. Vincent's, St. James, St. Columcille's, St. Patrick's. Tallaght University Hospital and Temple Street Children's Hospital.		
<b>GP Training Practices</b>	There are 48 GP trainers attached to the TCD scheme. Training practices are located in Dublin city and county, Kildare, Meath and Wicklow.		

## MIDLANDS

<b>Scheme Director</b>	Dr. Sean Montague (Acting)		
<b>Scheme Contact Details</b>	057 937 0653 <a href="mailto:midlands.scheme@icgp.ie">midlands.scheme@icgp.ie</a>		
<b>Location of Day Release</b>	Unit 8A Burlington Business Park, Srah Ave, Tullamore, Co. Offaly, R35 F7X4		
<b>Day Release held on</b>	Wednesday	<b>Intake in 2023</b>	17 including 1 RPL
<b>Hospital Based Posts</b>	Hospital posts are based the Midlands Hospital Tullamore, Midland Regional Hospital Portlaoise; Regional Hospital Mullingar; St. Luke's Hospital, Kilkenny; St. Loman's Hospital Mullingar; St. Fintan's, Laois.		
<b>GP Training Practices</b>	There are 34 GP trainers attached to the Midlands scheme. Training practices are located in Longford, Laois, Offaly and Westmeath.		

To find out more join our application and information session on Thursday, 5 October, 6pm – [To register click here](#)

**This prospectus is for information and guidance purposes only and does not form part of any training contract.**

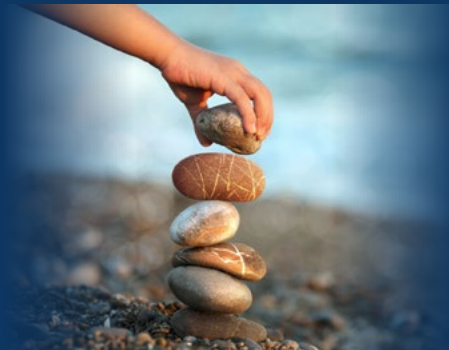
# #BEAGP

[www.beagp.com](http://www.beagp.com)

Make a real difference



Enjoy a balanced life



Be a generalist and a specialist



For queries regarding the 2023 GP Trainee Recruitment please email: [gptraining@icgp.ie](mailto:gptraining@icgp.ie)